



## Holy Family RC Primary School Newsletter

*"Working together as a family, following in the footsteps of Jesus, always giving our best."*

Mrs L. Mills, Headteacher- [holyfamilyprm@cardiff.gov.uk](mailto:holyfamilyprm@cardiff.gov.uk)

Priest in charge: Father Soloman

Weekend Mass times- Saturday 6.00pm, Sunday 9.30am

Telephone: School 029 20565354 Church: 029 20230492

School website address - <https://www.holyfamilyprm.co.uk>

April 12th 2024

# Welcome Back!!!

I hope that you all enjoyed the Easter Break. The children have settled back into their routine really well and working really hard. The children will undertake Welsh Government National Tests, and internal tests from **May 8<sup>th</sup>-May 23<sup>rd</sup>**. It is vital that the children are in school everyday and on time so that we can assess their progress to date. Unless your child is genuinely unwell, please ensure that your child is in school every day, thank you.

**Reminder that Monday May 6<sup>th</sup> May is a Bank Holiday. Friday May 24<sup>th</sup> is an Inset Day and Monday June 3<sup>rd</sup>**

### Catholic Life of the school



This week in assembly we listened to the Gospel about doubting Thomas. We affirmed that 'Yes we are believers!'

### Priest in charge

Father Soloman has been appointed temporary priest for Holy Family and St Mary's. Telephone number **02920320492**. Email [canton@rcadc.org.uk](mailto:canton@rcadc.org.uk)

# Eloquent and Truthful



As a school we focus on a set of Virtues each half term. The Virtues this half term are:  
**Eloquent and Truthful.**

These Virtues will be a focus in Class and assemblies. The children will learn about the Virtues and be encouraged to use these Virtues whenever possible, give examples of when they use them, and how they will impact on themselves and others. To be **eloquent** is to be able to express emotions, ask questions, talk about matters and debate points of view. When we are **truthful**, we speak the truth in all its depth; we search for the deeper truth.



On Monday afternoon we had a visit from the Lifeguards at Rest Bay. We learnt how to keep safe in the water. We really enjoyed the visit!



### Easter raffle

The raffle raised £220 . We will use this to buy equipment for the playground- skipping ropes, balls etc.



### Attendance

You have probably noticed the banner outside the school. We are working alongside Cardiff Council to try and get our attendance back to where it was pre-pandemic. We regularly had

attendance of 95% each day, currently we are lucky to achieve 90% each day. Please make every effort to send your child to school every day unless they are unwell.



### Late in the mornings

This has become a problem again, in many of the Classes. It is extremely disruptive when children are late for the following reasons:



1. They miss the vitally important introduction to the day's learning
2. The Teacher has to get the Register back out to record the late mark (this stops them from teaching)
3. The Dinner register has to be changed (this stops the teacher from teaching)
4. Miss Jenkins/ Mrs Chivers/ Mrs Mills must leave the Office to escort children to their Classroom, particularly if they are in the Foundation Phase. This leaves the Office unstaffed; the telephone and door unanswered and important administration work interrupted.
5. Some children receive additional learning interventions from the Teaching Assistants, these begin at 8.55am, your child would then miss these short but very important daily sessions. They cannot be rescheduled as the Teaching Assistants work to very tight timetables.

Be on time



at five to nine

**Most importantly they miss out on valuable learning opportunities and, they are often very embarrassed if they are regularly late.**

**Please make every effort to ensure that your child is in school for 8.55a.m.  
Thank you.**

**Diary dates 2023/24**

**These will be regularly updated:**

**April 2024**

Tuesday 16<sup>th</sup> April Parental Consultation Evening- appointments will be emailed  
Tuesday 23<sup>rd</sup> April Parental Consultation Evening- appointments will be emailed  
Thursday April 25<sup>th</sup> Class 6 assembly 3pm parents are welcome to attend  
Friday April 26<sup>th</sup> Year 5 children go to Manor Adventure residential weekend  
Sunday April 28<sup>th</sup> Year 5 children return from Manor Adventure residential weekend  
Monday April 29<sup>th</sup> Year 6 Cycling Course begins

**May 2024**

Thursday 2<sup>nd</sup> May Year 6 Cycling Course finishes  
**Monday May 6<sup>th</sup> Bank Holiday School is closed**  
Wednesday May 8<sup>th</sup> National Tests begin for children in Years 2-6  
Wednesday May 8 Class photographs  
Thursday May 9<sup>th</sup> Ascension Day Mass 9.45am at Holy Family Church Years 2-6 to attend  
Thursday May 16<sup>th</sup> Class 1 assembly 3pm parents are welcome to attend  
Thursday May 23<sup>rd</sup> National Tests finish for Years 2-6  
**Friday May 24<sup>th</sup> Inset Day School closed to children**  
**Friday May 24<sup>th</sup> school closes for half term**

**June 2024**

**Monday June 3<sup>rd</sup> Inset day school closed to children**  
Tuesday June 4<sup>th</sup> children return to school after the half term  
Sunday 9<sup>th</sup> June First Holy Communion Mass  
Thursday June 13<sup>th</sup> Class 2 Assembly 3pm parents are welcome to attend  
Tuesday June Year 6 Leavers' Mass St David's Cathedral  
Wednesday June 19<sup>th</sup> Sports Day  
Tuesday 25<sup>th</sup> June reserve Sports Day

**July 2024**

Tuesday 2<sup>nd</sup> July Year 5 and 6 Summer Play 2pm  
Wednesday 3<sup>rd</sup> July Year 5 and 6 Summer Play 2pm  
Thursday July 4<sup>th</sup> Mass at Corpus Christi High School for Year 6 children attending Corpus Christi  
September 2024 at 6.30pm  
Tuesday 9<sup>th</sup> July Y6 full day Transition visit to Corpus Christi High School  
Thursday July 11<sup>th</sup> Class 3 Assembly 3pm parents are welcome to attend  
Thursday 18<sup>th</sup> July Leavers' Mass 18<sup>th</sup> July 9.30am  
Thursday 18<sup>th</sup> July Leavers' Assembly 18<sup>th</sup> July 2pm  
**Friday July 19<sup>th</sup> school closes for the summer holiday**

**Inset Days**

**Friday 24<sup>th</sup> May 2024**

**Monday 3<sup>rd</sup> June 2024**

**Monday 22<sup>nd</sup> July 2024**

**Term dates 2023/24**

| <b>Term</b>   | <b>Term begins</b>         | <b>Half Term begins</b>      | <b>Half Term ends</b>       | <b>Term ends</b>             |
|---|----------------------------|------------------------------|-----------------------------|------------------------------|
| <b>Autumn Term</b>  | <b>Monday<br/>4/9/2023</b> | <b>Monday<br/>30/10/2023</b> | <b>Friday<br/>3/11/2023</b> | <b>Friday<br/>22/12/2023</b> |
| <b>Spring Term</b>  | <b>Monday<br/>8/1/24</b>   | <b>Monday<br/>12/2/24</b>    | <b>Friday<br/>16/2/24</b>   | <b>Friday<br/>22/3/24</b>    |
| <b>Summer Term</b><br><small>*6/5/24 May Day<br/>Bank Holiday</small> | <b>Monday<br/>8/4/24</b>   | <b>Monday<br/>27/5/24</b>    | <b>Friday<br/>31/5/24</b>   | <b>Monday<br/>22/7/24</b>    |

**Term Dates 2024/25**

| <b>Term</b>   | <b>Term begins</b>         | <b>Half Term begins</b>      | <b>Half Term ends</b>       | <b>Term ends</b>             |
|---|----------------------------|------------------------------|-----------------------------|------------------------------|
| <b>Autumn Term</b>  | <b>Monday<br/>2/9/2024</b> | <b>Monday<br/>28/10/2024</b> | <b>Friday<br/>1/11/2024</b> | <b>Friday<br/>20/12/2024</b> |
| <b>Spring Term</b>  | <b>Monday<br/>6/1/25</b>   | <b>Monday<br/>24/2/25</b>    | <b>Friday<br/>28/2/25</b>   | <b>Friday<br/>11/4/25</b>    |
| <b>Summer Term</b><br><small>*5/5/25 May Day<br/>Bank Holiday</small> | <b>Monday<br/>28/4/25</b>  | <b>Monday<br/>26/5/25</b>    | <b>Friday<br/>30/5/25</b>   | <b>Monday<br/>21/7/25</b>    |





# Class One



Our new topic this term is 'Down on the Farm'



We have been making some large farm animals for our display.



We have been playing in our Farm Cafe.



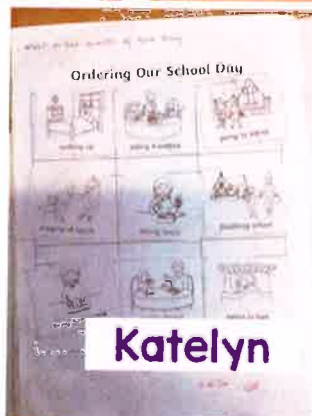
Do you like our carrots?



We have been playing an addition game.



We have been ordering numbers to 20.



Katelyn



Charlie



We have also been ordering the school day.



PIC COLLAGE





## Class 2



This week we have started our new Context for Learning called “Seeds, Soil and Sunshine”. We have been finding out about different plants and what they grow from. We have sorted seeds and bulbs and transplanted the seedlings that we are growing for our edible garden plot.



Our class worship this week was based on the virtue for this half term – Eloquent and Truthful. We added our individual tokens to the Virtue Tree and thought about how we can be Eloquent and Truthful in our own lives.

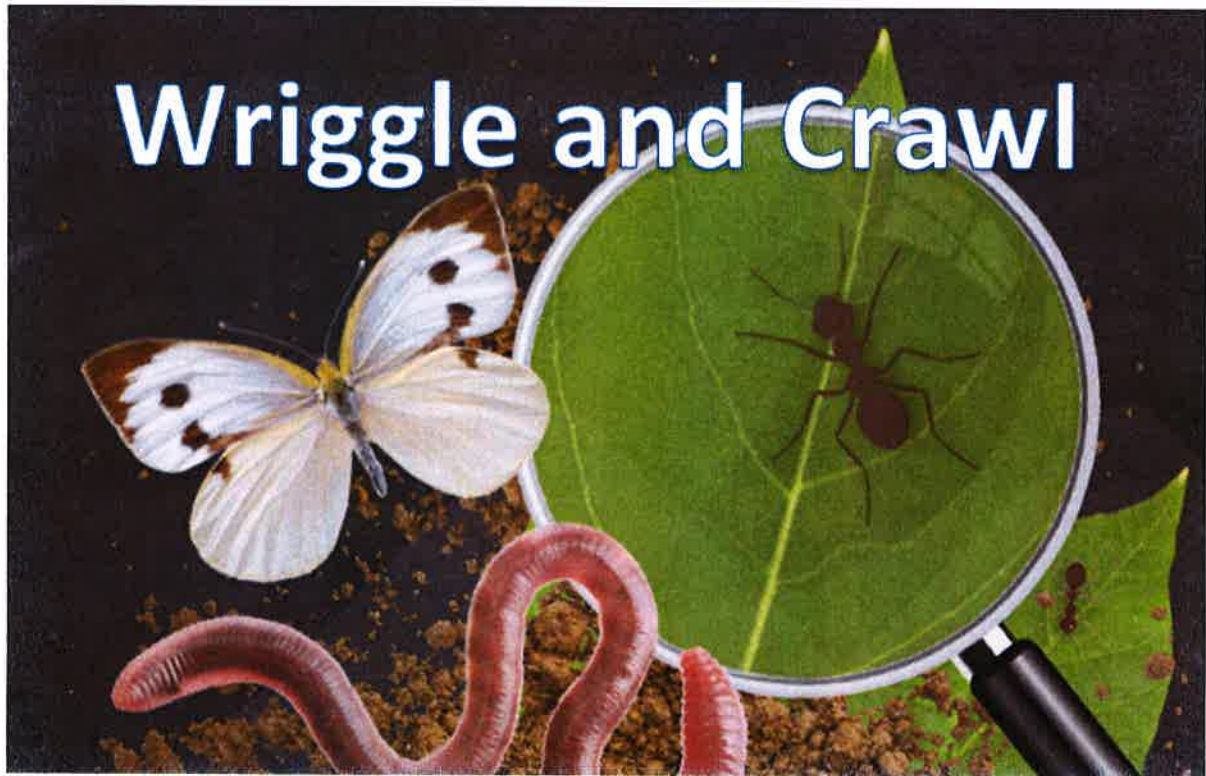






# Class 3

12.04.24



define form table

search sort by [entered]

record 1 of 7

|           |                             |
|-----------|-----------------------------|
| minibeast | beetle                      |
| diet      | fruit, wood plants or leafs |
| habitat   | in the woods                |

In the Wriggle and Crawl topic we will be exploring living things and their habitats. We will also be observing and investigating the life-cycle of insects.

This week we have been researching the different types of insects, their habitats and their diets. We made handwritten notes onto paper and then used J2Data to record put our research into a table.

| minibeast   | diet                         | habitat      |
|-------------|------------------------------|--------------|
| beatle      | fruit, wood plants or leafs  | in the woods |
| grasshopper | stems or seeds               | fields       |
| ants        | sweets                       | underground  |
| snail       | leafs and other animals      | litter       |
| worm        | dead animals, waste and soil | soil         |
| ladybug     | mites and plants             | grasslands   |
| woodlouse   | ants and own faces           | under rocks  |





# Class Four.



## Wild Wood.

This project has a forest skills and art focus and teaches the children about woodland areas, animals which live in these habitats and food chains. At the heart of this project the children will write poetry using descriptive language about wildlife and their habitats and develop additional skills in writing explanation and information writing. The children will apply their skills and understanding by creating a 3D installation on the theme of 'Wild Wood'. In this project the children will learn:

- About the habitats and characteristics of the local wildlife, and about the challenges facing them;
- How to use a range of sources to obtain information, including fieldwork and ICT;
- The children will be creating art from nature in the style of Andy Goldsworthy, as well as making picture frames, tree hangings and bird feeders.
- They will put their measuring skills to use by measuring the height of plants and bushes, the circumference of trees within the school grounds and measuring rainfall.

### Key vocabulary to learn:

Environment

Habitat

Evergreen

Deciduous

Nutrients

Nocturnal

Diurnal

Germination

Photosynthesis

Carbon dioxide

Oxygen

Transpiration

Producer

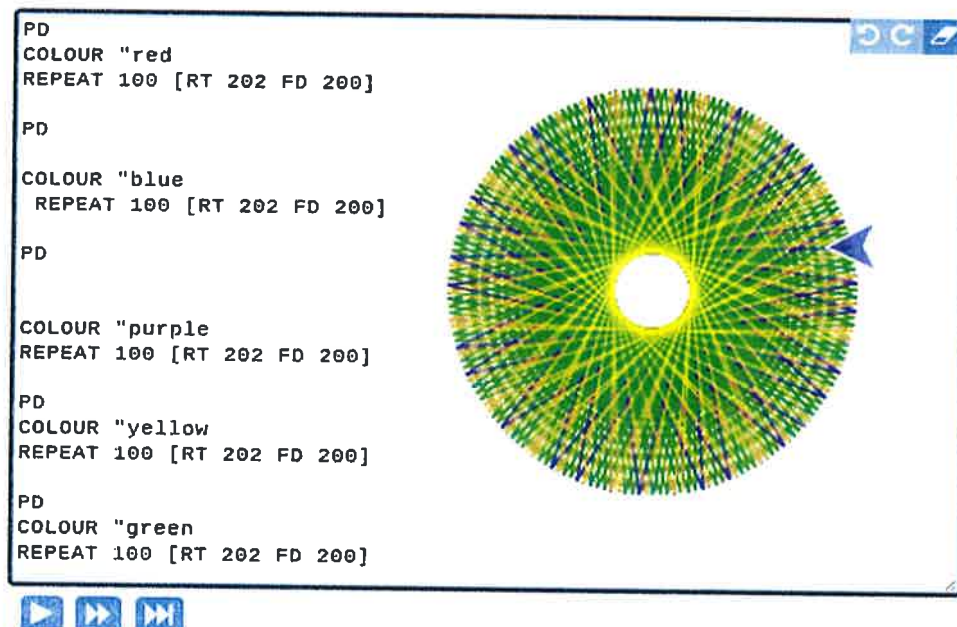
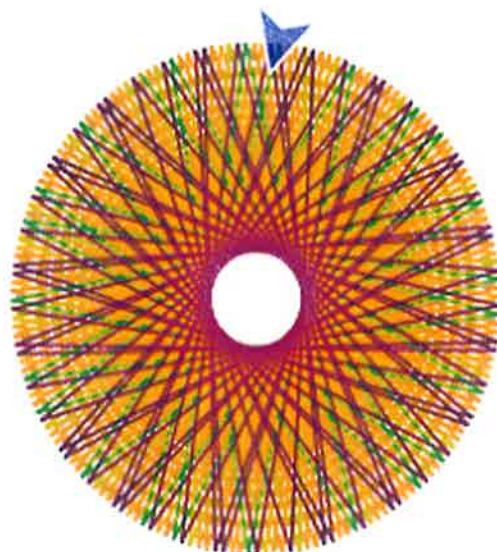
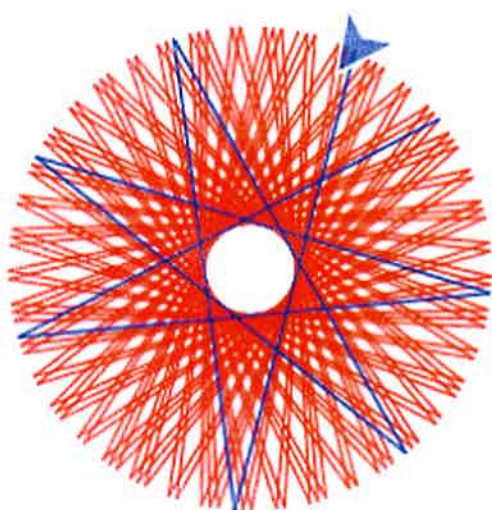
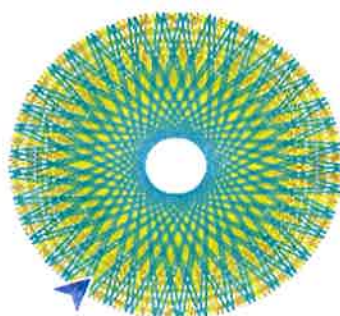
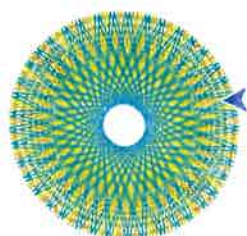
Consumer

Predator



## CODING IN CLASS 5

We have used a LOGO program this week to create polygons and patterns using loops. The coding helped to improve our understanding of acute and obtuse angles as well as iteration (loops / repetition) in code. Here are some lovely examples from Tallulah in Year 5:





## Class 6

This week we have been investigating how light passes through, or is blocked by different materials. We used a special app called Arduino SJ to record the levels of light that pass through a variety of materials. The units of measure used were EV (Exposure Value) We recorded our data on an excel spreadsheet. We created a table of results and an appropriate bar line graph. We also used a formula to generate the mode and median and we evaluated our results. Materials that are opaque (black card) had an exposure value of -6.3 which indicates that no light was able to pass through. The transparent and translucent materials enabled a higher level of light to pass through with EV readings between 4.9-6.2.

