



## Holy Family RC Primary School Newsletter

"Working together as a family, following in the footsteps of Jesus, always giving our best."

Mrs L. Mills, Headteacher- [holyfamilyprm@cardiff.gov.uk](mailto:holyfamilyprm@cardiff.gov.uk)

Priest in charge: Father Solomon

Weekend Mass times- Saturday 6.00pm, Sunday 9.30am

Telephone: School 029 20565354 Church: 029 20230492

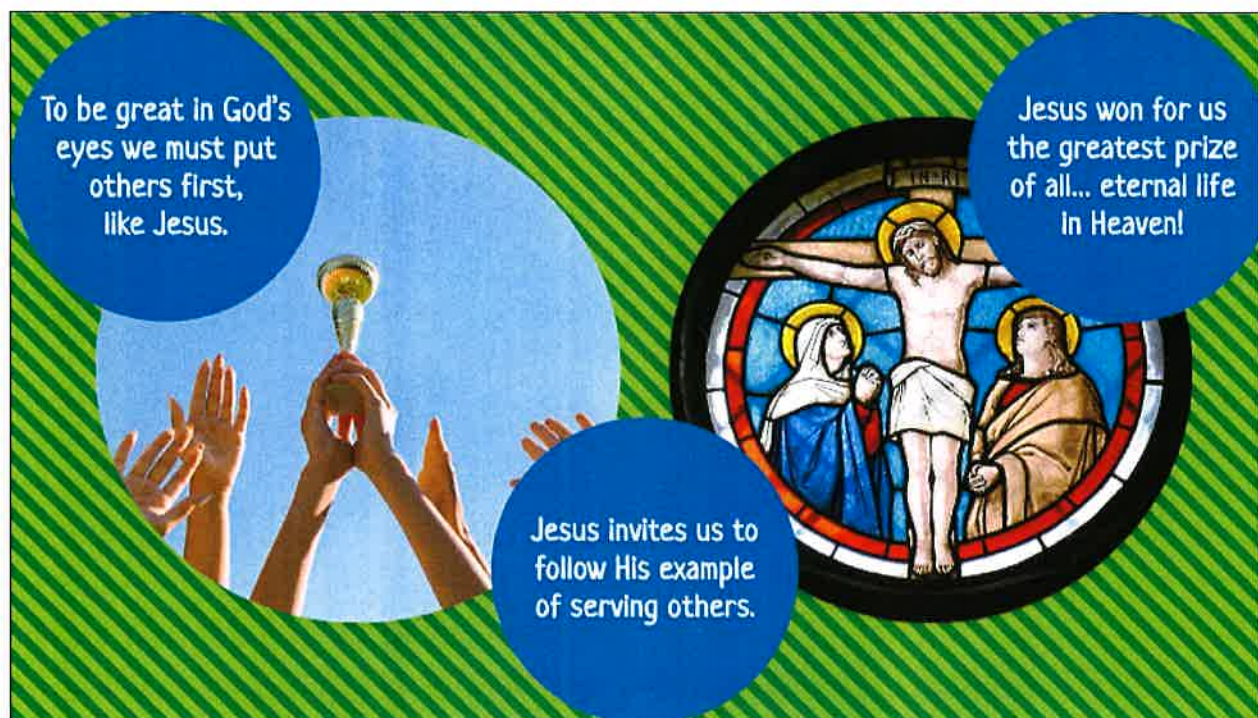
School website address - <https://www.holyfamilyprm.co.uk>

October 25th 2024

After a well-deserved break, we look forward to seeing the children after half term. We return to school on Monday 4th November.

### Catholic Life of the School

In assembly this week we learned about the eternal prize. To be great in God's sight, we must put others first. We will attain the greatest prize, they of eternal life in heaven.



## Disco

The disco was a great success. Many thanks to the parents that helped. Logan's mum in Class 1, Elouise and Layla Ann's mum, Freddie and Millie's mum and Olivia's Mum. Many thanks to Hallie Mae's mum for her hand over to the new parents who are now helping.

## Attendance

If your child is unwell, please telephone the school the first morning of their absence; we have a dedicated telephone line where you can leave a message. If your child is unwell in the morning but then perks up, please bring them into school, they will then get their afternoon mark.



## Attendance Matters

Attendance Percentage	Days at School	Number of Absences		
100%	190	0	Well Done	Best chances of success.
95%	180	10		
90%	171	19	'We are Worried'	Poor Attendance--Less chance of success
85%	161	29		
80%	152	38	'We are Seriously Concerned'	Very Poor Attendance--Serious impact on education and reduces life chances.
75%	143	47		

## School uniform labelled

Please ensure all uniform is labelled, particularly Jumpers and Fleece. Thank you.

## Sharing success

If your child achieves something we can celebrate, either email a photograph or the child can bring in their certificates, trophies etc. We will publish the good news in the Newsletter.

## **Diary dates 2024/25**

These will be regularly updated:

**Friday 25<sup>th</sup> October school closes for half term at 3.30pm**

### **November**

Monday 4<sup>th</sup> November children return to school after half term

Thursday 7<sup>th</sup> November Class 5 Assembly at 3pm

**Friday 8<sup>th</sup> November Inset Day (joint with Corpus Christi High School). School closed to children.**

Monday 11<sup>th</sup> November Class 5 Assembly at 3pm

Monday 11<sup>th</sup> November applications open for children applying for Reception September 2025.

Applications via Cardiff Council online admissions portal.

Wednesday 13<sup>th</sup> November Parental Consultation Evening for all Classes. Appointments will be emailed to parents

Wednesday 20<sup>th</sup> November Parental Consultation Evening for Class 5. Appointments will be emailed to parents.

Thursday 21<sup>st</sup> November Parental Consultation Evening for Classes 1,2,3,4 and 6. Appointments will be emailed to parents.

### **December**

Monday 2<sup>nd</sup> December Year 6 Cycling Proficiency Training- full week

Tuesday 3<sup>rd</sup> December Class 1 and 2 Christmas Play 2pm

Wednesday 4<sup>th</sup> December Class 1 and 2 Christmas Play 2pm

Tuesday 10<sup>th</sup> December Class 3 and 4 Christmas Play 2pm

Wednesday 11<sup>th</sup> December (morning) Class 1 and 2 Sleeping Beauty pantomime at Bridgend College

Wednesday 11<sup>th</sup> December Class 3 and 4 Christmas Play 2pm

Wednesday 18<sup>th</sup> December Christmas Lunch for the children

Thursday 19<sup>th</sup> December Christingle Carol Service 9.30am

Friday 20<sup>th</sup> December Christmas Disco for the children- in the afternoon. School closes for the Christmas holidays 3.30pm

### **January**

**Monday 6<sup>th</sup> January Inset Day school closed to children**

Tuesday 7<sup>th</sup> January children return to school

Monday 13<sup>th</sup> January closing date for applications for children starting Reception September 2025

Friday 24<sup>th</sup> January St Dwynwen's Day – children to wear red

### **February**

Tuesday February 11<sup>th</sup> Safer Internet Day

Thursday 13<sup>th</sup> February Valentine Disco. Classes 1, 2, and 3 4.15pm-5.15pm. Classes 4, 5 and 6 5.30pm-6.45pm.

**Friday 21<sup>st</sup> February Inset Day. School closed to children. Half term begins**

### **March**

Monday 3<sup>rd</sup> March children return to school after half term

Wednesday 5<sup>th</sup> March Ash Wednesday Lent begins

Friday 7<sup>th</sup> March St David's Day Celebrations

Monday 10<sup>th</sup> March World Book Day

Monday 17<sup>th</sup> March children in Year 6 attend Llangrannog Residential Centre

Wednesday 19<sup>th</sup> March children in Year 6 return from Llangrannog Residential Centre

### **April**

Monday 7<sup>th</sup> April Class 1, 2 and 3 Palm Sunday Assembly 3pm

Tuesday 8<sup>th</sup> April Class 4 Last Supper Assembly 3pm

Wednesday 9<sup>th</sup> April Class 5 The Agony in the Garden and Trial of Jesus Assembly 3pm

Thursday 10<sup>th</sup> April Class 6 Crucifixion of Jesus Assembly 3pm

Friday 11<sup>th</sup> April Easter Raffle and school closes for the Easter holidays at 3.30pm

Monday 28<sup>th</sup> April children return to school after the Easter holidays

Monday 28<sup>th</sup> April Y5 children attend Manor Adventure Abernant Residential Centre

Wednesday 28<sup>th</sup> April Y5 children return from Manor Adventure Abernant Residential Centre

### **May**

**Monday 5<sup>th</sup> May school closed for Bank Holiday Monday**

Monday 12<sup>th</sup> May National tests begin for Classes 3-6

Friday 23<sup>rd</sup> May National tests finish. **School closes for half term 3.30pm**

### **June**

**Monday 2<sup>nd</sup> June school closed to children for an Inset Day**

Thursday 19<sup>th</sup> June Sports Day

Thursday 26<sup>th</sup> June reserve Sports Day if weather is poor on June 19<sup>th</sup>

### **July**

Tuesday 8<sup>th</sup> July Class 5 and 6 Play 2pm

Wednesday 9<sup>th</sup> July Class 5 and 6 Play 2pm

Thursday 17<sup>th</sup> July Year 6 Leavers' Mass and Assembly

**Monday 21<sup>st</sup> July Inset Day – school closes for the summer holidays**

**Inset Days 2024/25**

**Friday November 8<sup>th</sup> 2024 - joint Inset Day with Corpus Christi High School**

**Monday 6<sup>th</sup> January 2025**

**Friday February 21<sup>st</sup> 2025**

**Monday June 2<sup>nd</sup> 2025**

**Monday 21<sup>st</sup> July 2025**

**Term Dates 2024/25**

<b>Term</b>	<b>Term begins</b>	<b>Half Term begins</b>	<b>Half Term ends</b>	<b>Term ends</b>
<b>Autumn Term</b>	<b>Monday 2/9/2024</b>	<b>Monday 28/10/2024</b>	<b>Friday 1/11/2024</b>	<b>Friday 20/12/2024</b>
<b>Spring Term</b>	<b>Monday 6/1/25</b>	<b>Monday 24/2/25</b>	<b>Friday 28/2/25</b>	<b>Friday 11/4/25</b>
<b>Summer Term</b> <small>*5/5/25 May Day Bank Holiday</small>	<b>Monday 28/4/25</b>	<b>Monday 26/5/25</b>	<b>Friday 30/5/25</b>	<b>Monday 21/7/25</b>

**Term Dates 2025/26**

<b>Term</b>	<b>Term begins</b>	<b>Half Term begins</b>	<b>Half Term ends</b>	<b>Term ends</b>
<b>Autumn Term</b>	<b>Monday 1/9/2025</b>	<b>Monday 27/10/2025</b>	<b>Friday 31/10/2025</b>	<b>Friday 19/12/2025</b>
<b>Spring Term</b>	<b>Monday 5/1/26</b>	<b>Monday 16/2/26</b>	<b>Friday 20/2/26</b>	<b>Friday 27/3/26</b>
<b>Summer Term</b> <small>*4/5/26 May Day Bank Holiday</small>	<b>Monday 13/4/26</b>	<b>Monday 25/5/26</b>	<b>Friday 29/5/26</b>	<b>Monday 20/7/26</b>

# Class One



This week we have been learning all about Baptism.



Mahmoud



Theophilus



Treasure

We have also been making scarecrows.

Joshua



# Class 3



As part of our Religion topic 'Creation and Covenant' we have been writing our own psalms. Here is a psalm written by Tabitha.

Great and wonderful Creator God.

I thank you and I praise you for creating wonderful me.

**You love me and you know me.**

Wonderful God you created the stars and the moon.

**You love me and you know me.**

You made the sun and the rain.

**You love me and you know me.**

You made the sea and the sand.

**You love me and you know me.**

You made the beautiful flowers and trees.

**You love me and you know me.**

You made the rainbows and the clouds.

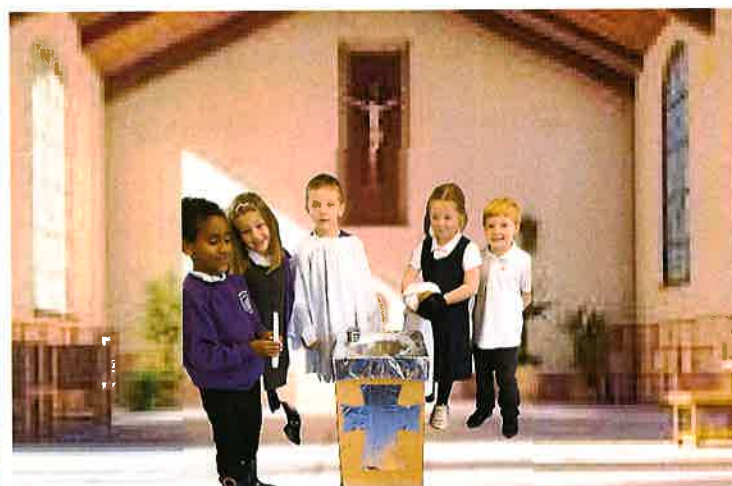
**You love me and you know me.**

You are always there for me.

**You love me and you know me.**

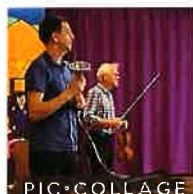


We have also been learning about the sacrament of Baptism this week. We watched a Baptism video and looked carefully at the signs and symbols of Baptism. We also roleplayed a Baptism in class.



## Class 4

Many thanks to "BBC Music Workshops" for the wonderful experience the children had on Friday morning. They listened to an amazing concert by members of The Welsh National Opera, followed by a P Bones lesson accompanied by professional musicians. We are lucky to have so many talented children here at Holy Family!



PIC•COLLAGE

PIC•COLLAGE

# NUMERACY INVESTIGATIONS IN CLASS 5

In class 5, we have investigated the relationship between height and arm span and identified possible general statements. We used measuring tapes to record everyone's height and arm span to explore patterns. We recorded the results in a spread sheet and used formulae to calculate different averages, difference and percentage similarity. This is what Layla Ann discovered:

Layla-Ann

WALT investigate the relationship between height and arm span and identify possible general statements

NAME in INITIALS	Arm span in cm	Height in cm	Difference / range in cm	% similarity
RRS	144	144	=144-144	100
NB	150	154	4	97.4025974
LK	136	141	5	96.45390071
JT	141	141	0	100
LAR	146	148	2	98.64864865
MJ	137	141	4	97.16312057
JS	141	142	1	99.29577465
CC	133.5	141	7.5	94.68085106
RR	148	145.5	2.5	98.31081081
SC	149	158	9	94.30379747
MM	147	145	2	98.63945578
CT	142	138	4	97.18309859
LR	150	145	5	96.66666667
DP	133	137	4	97.08029197
ES	145	144	1	99.31034483
AR	131	139	8	94.24460432
EM	144	136	8	94.44444444
AK	142	140	2	98.5915493
RK	143	150	7	95.33333333
KN	140	148.5	8.5	94.27609428
TA	141	144	3	97.91666667
HA	162	152	10	93.82716049
	<b>Average arm span in cm</b>	<b>Average height in cm</b>	<b>Average difference in height and arm span</b>	<b>AVERAGE % similarity</b>
	142.9772727	144.2727273	4.431818182	96.98969145

## Conclusion

Analysing the sets of data, I can conclude the following general statements are true/correct:

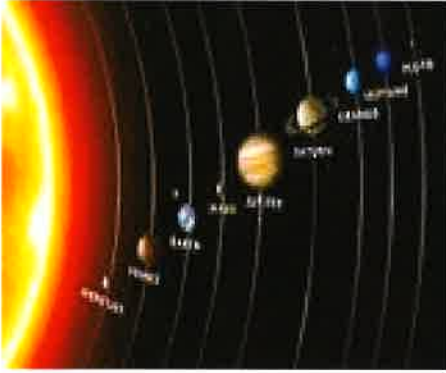
- On average, most people are taller than their arm span.
- On average, most people are about 1.5 cm taller than their arm span.

## Observations:

- Some people have exactly the same height and arm span (Ruby and Jacob)
- Some people have a bigger arm span than their height (Rishi, Caitlyn, Alaska, Mason, Layla-Rose, Ethan, Emily) **By Layla Ann**

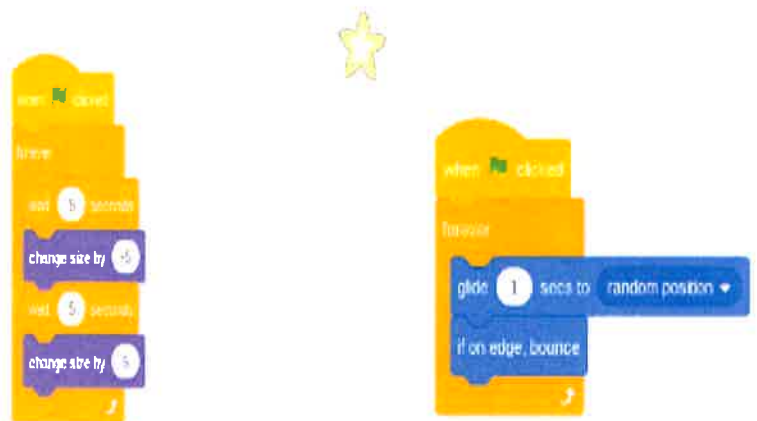
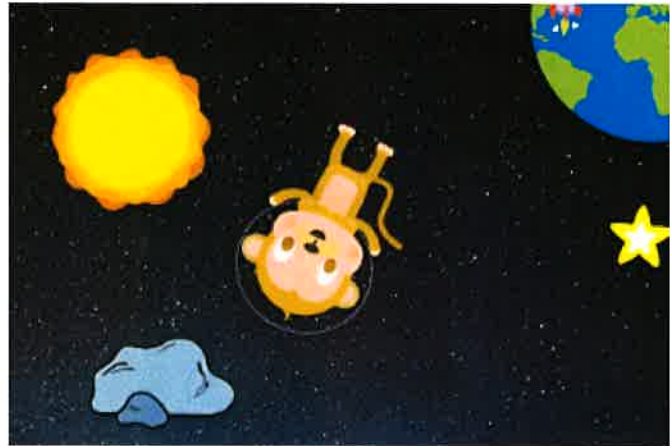






# Class 6

In Class 6 we have been developing our DCF skills. Here is one of our tasks. We coded a space animation using scratch. We have linked it to our science topic Planets and forces. The pupils created backdrops and coded the sprites to create a scene from outer space.



Code Builder



In addition to this, the pupils used Minecraft coding to crack and solve the coding puzzles using controllers, agent move and de bugging.